

It is a violation of federal law to use this product in a manner inconsistent with its labeling.
For any requirements specific to your State or Tribe, consult the State or Tribal agency
responsible for pesticide regulation.

MOSQUITO LARVAE CONTROL

Summit® B.T.I. Mosquito Granules are a highly selective biopesticide effective against mosquito larvae in a variety of habitats. When spread over the surface of standing water, **Summit® B.T.I. Mosquito Granules** release a biological mosquito larvicide into the water. This larvicide kills mosquito larvae in the water column and on the water surface. **Summit® B.T.I. Mosquito Granules** may be used in all types of standing water, sites where mosquito larvae grow up.

Summit® B.T.I. Mosquito Granules will give a quick kill within 24 hours and can control for up to 14 days in water of low to moderate organic content. Employ a 7- to 14-day interval between applications. For more residual, long-term control, consider using **DUNKS®** or **Summit® B.T.I. Mosquito Briquets** after applying **Summit® B.T.I. Mosquito Granules**.


For use in or on woodland pools; snowmelt ponds; saltwater and freshwater marshes; catch basins; gutters; storm water retention areas and open drains; flood waters; lakes; ponds; irrigation ditches; ornamental water gardens and pools; roof and street gutters; bird baths; tree holes; unused swimming pools; discarded automobile tires; standing water in greenhouses and nurseries; sewage lagoons; irrigated and non-irrigated pastures; estuarine areas; roadside ditches; irrigation ditches; rice fields; rain barrels and other water storage containers, including unused cisterns and water tanks; and similar standing water where mosquito larvae occur.

Use 2.5-10 pounds of **Summitto B.T.I. Mosquito Granules** per acre of water with the lower application rate for relatively clean water and higher application rate for water with greater organic content. Use 10-20 pounds of **Summitto B.T.I. Mosquito Granules** per acre of water in deep water. Apply **Summitto B.T.I. Mosquito Granules** by conventional aerial or ground equipment or manually. Uniform coverage provides best results. Use a 7 to 14-day interval between applications. The interval depends on initial application rates, larval population densities, and organic content of the water. Monitoring will indicate the best retreatment interval. **Summitto B.T.I. Mosquito Granules** are not intended for use in areas where mosquito control is not the primary purpose of the mosquito larvae. Therefore, longer periods of mosquito control may occur because of predators eating the mosquito larvae. The applicator is responsible for monitoring equipment, calibrating equipment, and knowing local weather conditions to prevent drift and other application variables.

Aquaponics is aquaculture (raising fish) and hydroponics (the soilless growing of plants) that grow fish and plants together in an integrated system. Hydroponics is growing plants without soil, using mineral nutrient solutions in a water solvent. At times, both aquaponics and hydroponics result in conditions that are favorable to mosquito larval growth. Because of the nutrients present in water used for both, use the higher application rate and more frequent application interval for **Summit® S.T.I. Mosquito Granules** for mosquito larvae control (described in the "MOSQUITO ABATEMENT" section above.)

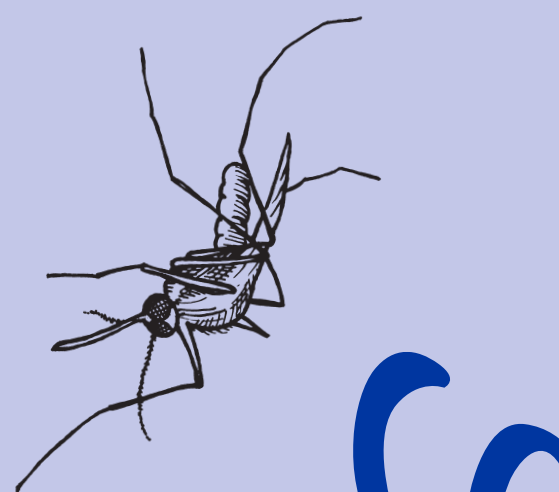
<h2 style="text-align: center;">STORAGE AND DISPOSAL</h2> <p style="text-align: center;">Do not contaminate water, food, or feed by storage or disposal.</p>	
PESTICIDE STORAGE:	Reseal unused portions of product. Store this product in original, sealed container in a cool, dry, and well-ventilated place inaccessible to children and pets.
PESTICIDE DISPOSAL:	To avoid waste, use all material in this container by application according to label directions. If waste cannot be avoided, offer remaining product to a waste disposal facility or pesticide disposal program (often such programs are run by state or local governments or by industry).
CONTAINER HANDLING:	Nonrefillable container. Do not reuse or refill this container. Completely empty bag into application equipment. Then, offer for recycling if available, or dispose of empty bag in a sanitary landfill or by incineration. Do not burn, unless allowed by state and local ordinances. If burned, stay out of smoke.

NOTICE TO USER: To the extent consistent with applicable law, seller makes no warranty, express or implied, of merchantability, fitness or otherwise concerning the use of this product other than as indicated on this label. User assumes all risks of use, storage, or handling not in accordance with label instructions.



235 South Kresson Street
Baltimore, MD 21224-2616
800-227-8664
www.SummitChemical.com

SUMMIT CHEMICAL® IS A REGISTERED TRADEMARK OF SUMMIT CHEMICAL CO., BALTIMORE, MARYLAND.



Summit®
B.t.i. GRANTLES
Kills Mosquitoes Before They're Old Enough To Bite®



Summit® B.t.i. GRANULES

**Kills Mosquitoes Before
They're Old Enough To Bite®**

- Zika
- West Nile
- Dengue
- Chikungunya

For use in standing water where mosquito larvae occur.

of product. The percent active ingredient does not indicate product performance and potency measurements are not federally standardized.

NET WEIGHT: 40 LBS. (18.1 KGS.)

800-227-8664



SummitChemical.com



5/8 MESH



Summit®
***B.t.i.* GRANULES**
Kills Mosquitoes Before They're Old Enough To Bite®



Summit **B.t.i. GRANULES**

***Kills Mosquitoes Before
They're Old Enough To Bite®***

FIRST AID	
IF INHALED:	<ul style="list-style-type: none"> • Move person to fresh air. • If person is not breathing, call 911 or an ambulance, then give artificial respiration, preferably mouth-to-mouth if possible. • Call a poison control center or doctor for further treatment advice.
IF ON SKIN OR CLOTHING:	<ul style="list-style-type: none"> • Hold eye open, and rinse slowly and gently with water for 15-20 minutes. Remove contact lenses, if present, after the first 5 minutes, then continue rinsing eye. • Call a poison control center or doctor for treatment advice.
	<ul style="list-style-type: none"> • Take off contaminated clothing. • Rinse skin immediately with plenty of water for 15-20 minutes. • Call a poison control center or doctor for treatment advice.

Have the product container or label with you when calling a poison control center or doctor or when going for treatment. For information on this pesticide product (including general health concerns or pesticide incidents), call the National Pesticide Information Center at 1-800-858-7378, Monday through Friday, 8:00 AM to 12:00 PM Pacific Time. In the event of a medical emergency, call your poison control center at **1-800-222-1222**.

CAUTION: Harmful if inhaled or absorbed through the skin. Causes moderate eye irritation. Avoid breathing dust. Avoid contact with skin, eyes, or clothing. Wash thoroughly with soap and water after handling and before eating, drinking, chewing gum, using tobacco, or using the toilet. Remove and wash contaminated clothing before reuse.

Applicators and other handlers not in enclosed cabs or aircraft must wear


- Long-sleeved shirt and long pants
- Waterproof gloves
- Shoes plus socks
- Protective eyewear

Mixers/loaders and applicators not in enclosed cabs or aircraft must wear a NIOSH-approved particulate respirator with any N, P, or R filter with NIOSH approval number prefix TC-84A; or a NIOSH-approved powered air purifying respirator with an HE filter with NIOSH approval number prefix TC-21C. Repeated exposure to high concentrations of microbial proteins can cause allergic sensitization.

Follow the manufacturer's instructions for cleaning/maintaining PPE. If no such instructions are available for washables, use detergent and hot water. Keep and wash PPE separately from other laundry.

Users should:

- Remove clothing/PPE immediately if pesticide gets inside. Then wash thoroughly and put on clean clothing.
- Remove PPE immediately after handling this product. Wash the outside of gloves before removing. As soon as possible, wash thoroughly and change into clean clothing.



235 South Kresson Street
Baltimore, MD 21224-2616
800-227-8664
www.SummitChemical.com

SUMMIT CHEMICAL® IS A REGISTERED TRADEMARK OF SUMMIT CHEMICAL CO., BALTIMORE, MARYLAND